

# Ductile Iron Pipe & Fittings

## Saint-Gobain PAM

DI Pipe & Fittings for  
Water and Sewer applications

### Water Application

*Blutop / Natural Push-Fit Pipes and Fittings /  
Fabricated Pipes / Flanged Fittings /  
Classic Pipe Range*

106-116

### Sewer Application

*Integral Push-Fit Pipes and Fittings /  
Fabricated Pipes / Flanged Fittings*

117-119

### Valves

*Gate Valves / Air Valves / Flap Valves*

120-124

UTILITIES

# Saint-Gobain PAM

## Ductile Iron Pipe & Fittings

### Blutop



The Blutop range is a new Pipe System dedicated to small diameter potable water distribution.



#### Technical details:

- Diameter range: OD 75, 90, 110, 125 and 160
- Manual Push-Fit Joint:
  - Non restrained (Blutop)
  - Self-restrained (Blutop Vi)
- Coatings:
  - Pipes: BioZinalium\*, Zn-AL (Cu) alloy 400g/m<sup>2</sup> + Aquacoat (single component water-based paint)
  - Fittings: Blue Epoxy 250µm
- Linings:
  - Pipes: Ductan thermoplastic 300 µm, nominal adhesion 8MPa
  - Fittings: Blue Epoxy 250µm
- 6 degrees of angular deflection

\* BioZinalium is composed of 85% Zinc, 15% Aluminum and enriched with copper 5%.

#### Key features and benefits:

- Lighter pipe system, no cement mortar lining
  - Manual handling
- Ductile iron mechanical properties intact
- Compatible with plastic pipes (PVC, PE, etc.)
- Easy to assemble
- No need for bedding
- Use of excavated material as backfill
- No minimum height of cover
- Eco friendly:
  - Recycled and infinitely recyclable
  - Less energy consumption linked to transport
- Self-anchoring gasket available for restrained pipes application
- Better hydraulic capacity than same OD plastics

#### Standards and approvals:

- Approved for potable water under regulation 31.4.a
- WRAS approved
- Conforms with EN545

## Blutop – Continued

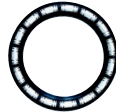
### Pipes & Gaskets

Wolseley code	Supplier code	DN/OD mm	Weight kg/m
<b>Pipes, 6m long</b>			
W13841	KXL75H60AQ	75	5.10
P79115	KXL90H60AQ	90	6.20
P79116	KXM11H60AQ	110	7.60
W13842	KXM12H60AQ	125	8.60
P79117	KXM16H60AQ	160	12.50



#### Gaskets

P79071	JXL75BA	75	–
P79036	JXL90BA	90	–
P79037	JXM11BA	110	–
P79038	JXM12BA	125	–
P79072	JXM16BA	160	–



#### Anchor Gaskets

P79073	JXL75CA	75	–
P79039	JXL90CA	90	–
P79040	JXM11CA	110	–
P79041	JXM12CA	125	–
CA0599	JXM16CA	160	–



Wolseley code	Supplier code	DN/OD mm	Weight kg
<b>Double Spigot Pipes, 1.16m long</b>			
W13843	229336	75	5.90
P79120	225410	90	7.10
P79121	225412	110	8.70
W13844	227062	125	10.00
P79123	229337	160	14.50

### Fittings

Wolseley code	Supplier code	DN/OD mm	Weight kg
<b>90° Bends</b>			
P79074	KXL75CA	75	4.40
P79042	KXL90CA	90	5.50
P79043	KXM11CA	110	7.10
P79124	KXM12CA	125	8.80
P79075	KXM16CA	160	12.30



#### 45° Bends

P79076	KXL75CB	75	4.20
P79044	KXL90CB	90	5.10
P79045	KXM11CB	110	6.20
P79046	KXM12CB	125	7.00
P79077	KXM16CB	160	10.30



Please note: weights are provided for estimation purposes only and actual values may vary from those provided in these tables.

# Saint-Gobain PAM

## Ductile Iron Pipe & Fittings

### Blutop – Continued

#### Fittings – Continued

Walseley code	Supplier code	DN/OD mm	Weight kg
---------------	---------------	----------	-----------

##### 22.5° Bends

P79078	KXL75CD	75	3.40
P79047	KXL90CD	90	4.40
P79048	KXM11CD	110	5.50
P79049	KXM12CD	125	6.60
P79079	KXM16CD	160	9.20



##### 11.25° Bends

P79076	KXL75CB	75	4.20
P79044	KXL90CB	90	5.10
P79045	KXM11CB	110	6.20
P79046	KXM12CB	125	7.00
P79077	KXM16CB	160	10.30

##### DN 80 Flanged Duckfoot Bends

P79125	KXL75DF0E	75 x 80	8.00
CA0601	KXL90DF0E	90 x 80	8.00
CA0602	KXM11DF0E	110 x 80	11.40
P79128	KXM12DF0E	125 x 80	13.60
P79129	KXM16DF0E	160 x 80	16.20
P79130	KXM16DF0F	160 x 100	16.40



##### Double Socket Tees with Flanged Branches

P79082	KXL75TD1A	75 x 40	5.80
P79083	KXL75TD1C	75 x 60	7.80
P79131	KXL90TD1A	90 x 40	6.80
P79132	KXL90TD1C	90 x 60	8.60
P79053	KXL90TD1E	90 x 80	9.40
P79133	KXM11TD1A	110 x 40	7.60
P79134	KXM11TD1C	110 x 60	9.40
P79054	KXM11TD1E	110 x 80	11.00
P79055	KXM11TD1F	110 x 100	12.20
P79135	KXM12TD1A	125 x 40	9.20
P79136	KXM12TD1C	125 x 60	10.80
P79056	KXM12TD1E	125 x 80	11.50
P79057	KXM12TD1F	125 x 100	12.20
P79137	KXM12TD1G	125 x 125	15.00
P79138	KXM16TD1A	160 x 40	11.30
P79084	KXM16TD1C	160 x 60	12.90
P79085	KXM16TD1E	160 x 80	14.30
P79086	KXM16TD1F	160 x 100	16.40
P79087	KXM16TD1G	160 x 125	18.00
P79088	KXM16TD1J	160 x 150	20.30



Please note: weights are provided for estimation purposes only and actual values may vary from those provided in these tables.

## Blutop – Continued

### Fittings – Continued

Walseley code	Supplier code	DN/OD mm	Weight kg
<b>All Socket Tees</b>			
P79139	KXL75TE0C	75 x 75	5.60
P79140	KXL90TE0C	90 x 75	6.30
P79141	KXL90TE0D	90 x 90	6.80
P79142	KXM11TE0C	110 x 75	8.00
P79143	KXM11TE0D	110 x 90	8.00
P79144	KXM11TE0E	110 x 110	8.70
P79145	KXM12TE0C	125 x 75	8.80
P79146	KXM12TE0D	125 x 90	9.20
P79147	KXM12TE0E	125 x 110	10.00
P79148	KXM12TE0G	125 x 125	11.00
P79089	KXM16TE0E	160 x 110	13.00
P79090	KXM16TE0G	160 x 125	13.60
P79149	KXM16TE0J	160 x 160	15.10



#### Collars

P79058	KXL90MN	90	4.00
P79059	KXM11MN	110	4.90
P79060	KXM12MN	125	5.50



#### Semi-Sliding Collars

P79091	KXL75MM	75	5.30
P79150	KXL90MM	90	6.30
P79151	KXM11MM	110	7.30
P79152	KXM12MM	125	8.80
P79092	KXM16MM	160	10.70



#### Flanged Sockets

P79153	KXL75BE1C	75	5.00
P79061	KXL90BE1E	90	5.50
P79062	KXM11BE1F	110	6.70
P79063	KXM12BE1G	125	8.20
P79093	KXM16BE1J	160	11.00



#### Flanged Spigots

P79154	KXL75BU1C	75	3.85
P79064	KXL90BU1E	90	4.70
P79065	KXM11BU1F	110	6.00
P79066	KXM12BU1G	125	7.90
P79094	KXM16BU1J	160	12.10



Please note: weights are provided for estimation purposes only and actual values may vary from those provided in these tables.

# Saint-Gobain PAM

## Ductile Iron Pipe & Fittings

### Blutop – Continued

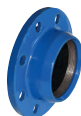
#### Fittings – Continued

Walseley code	Supplier code	DN/OD mm	Weight kg
<b>Tapers</b>			
P79160	KXL90VE0C	90 x 75	3.70
P79161	KXM11VE0C	110 x 75	4.60
CA0600	KXM11VE0D	110 x 90	5.00
P79163	KXM12VE0C	125 x 75	5.10
P79164	KXM12VE0D	125 x 90	5.20
P79165	KXM12VE0E	125 x 110	5.50
P79095	KXM16VE0C	160 x 75	6.50
P79096	KXM16VE0D	160 x 90	7.00
P79097	KXM16VE0E	160 x 110	7.40
P79098	KXM16VE0G	160 x 125	7.80



#### Quick Flanges

P79099	226300	75 x 60/65	2.40
P79166	216901	90 x 80	2.80
P79167	216902	110 x 100	3.40
P79168	216906	125 x 125	4.30
P79100	226301	160 x 150	5.70



#### Accessories

Walseley code	Supplier code	DN/OD mm	Weight kg
<b>Jointing Tools*</b>			
Blutop Jointing Kit DN/OD75-160			
P79184	233859	–	11.45
Blutop Jointing Tool – Spares			
P79185	233851	FORK OD75	0.80
P79186	233852	FORK OD90	1.20
P79187	233854	FORK OD110	1.35
P79188	233855	FORK OD125	1.40
P79189	233856	FORK OD160	1.80
P79190	233857	SLING	0.30

\* To be used only when the utilisation of a pinch bar or similar is not possible.

#### Drilling & Tapping Saddles

Please enquire		75	–
P79180	223387	90	12.60
P79181	223389	110	16.00
P79182	223390	125	22.60
P79183	233804	160	29.80

Please note: weights are provided for estimation purposes only and actual values may vary from those provided in these tables.

## Blutop – Continued

### Valves

Wolseley code	Supplier code	DN/OD mm	Weight kg
---------------	---------------	----------	-----------

#### Push-Fit Resilient Seated Gate Valve for Blutop or Plastic Pipes

##### Anti-clockwise Close with Cap Top

P79169	RDL75KDXH	75	12.30
P79170	RDL90KDXH	90	12.80
P79171	RDM11KDXH	110	16.20
P79172	RDM12KDXH	125	22.80
P79173	RDM16KDXH	160	30.00

##### Clockwise Close without Cap Top

P79174	RDL75KBXH	75	12.10
P79175	RDL90KBXH	90	12.60
P79176	RDM11KBXH	110	16.00
P79177	RDM12KBXH	125	22.60
P79178	RDM16KBXH	160	29.80

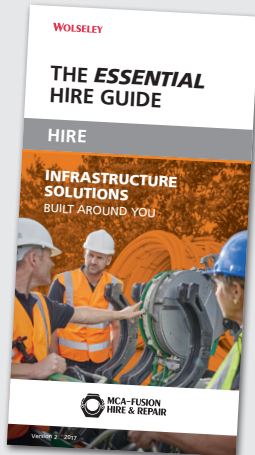


#### Drilling & Tapping Saddles

Please enquire		75	–
P79180	223387	90	12.60
P79181	223389	110	16.00
P79182	223390	125	22.60
P79183	233804	160	29.80

# We can supply trenchless technology

Pick up a copy of our handy hire guide at your local branch today



Speak to one of our team today on 0344 824 4482

# Saint-Gobain PAM

## Ductile Iron Pipe & Fittings

### Natural Push-Fit Pipes – Water Application

The PAM Natural range is a pipeline product dedicated to potable water applications, with a superior performance coating suitable for most types of soils. The PAM Natural range of pipes is available in diameters DN80 to 1000 and features a new high-performance external coating BioZinalium, a zinc/aluminum alloy enriched with copper and red aquacoat paint for DN80 to 600.

All Fittings are coated internally and externally with blue epoxy. Pipes and fittings are supplied as standard with the Rapid Push Fit Joint or Flanged Joints.

Wolseley code	Supplier code	Size mm
<b>Natural BioZinalium Push-Fit Pipe, 6m long</b>		
P88466	NSA80Q60AQ	80
P88467	NSB10Q60AQ	100
P88468	NSB15Q60AQ	150
P88469	NSB20Q60AQ	200
P88470	NSB25Q60AQ	250
P88471	NSB30F60AQ	300

For larger DN consult us

#### Push-Fit Gaskets (EPDM)

P80048	185405	80
P80148	185406	100
P80248	185407	150
P80348	185408	200
P83086	185409	250
P83087	185410	300

#### Push-Fit Gaskets (Anchor – EPDM)

P83092	JSA80CA	80
P83093	JSB10CA	100
P81236	JSB15DA	150
P81237	JSB20DA	200
P81238	JSB25DA	250
P83097	JSB30CA	300





## Natural Fabricated Pipes

Burdens can supply a range of Fabricated Pipe tailored to customer requirements. Double Flanged Pipe, Flange and Spigot Pipe, Double Spigot Pipe, Socket and Spigot Pipe (short length) and Flange and Socket Pipe, all with or without Puddle Flanges, are available in a variety of lengths in diameter DN80 to 2000.

For further information on this range, please contact your local branch.

Wolseley code	Supplier code	Size mm
<b>Double Flange 1000mm long</b>		
P84175	BBA80MT1CAC	80
P84176	BBB10MT1CAC	100
P84177	BBB15MT1CAC	150
P84240	QB20BB10AC2	200
P84256	QB25BB10AC2	250
BA4705	BBB30MT2CAC	300



<b>Flange Spigot 1000mm long</b>		
P84169	QA80BU10AC1	80
P84170	QB10BU10AC1	100
P84171	QB15BU10AC1	150
P84248	QB20BU10AC2	200
P84264	QB25BU10AC2	250
P84271	QB30BB10AC2	300



# We've got bags of cement in the mix



Civils pages 284-285

# Saint-Gobain PAM

## Ductile Iron Pipe & Fittings

### Natural Push-Fit Fittings

#### Natural Push-Fit Fittings

Walseley code	Supplier code	Size mm
---------------	---------------	---------

##### 90° Bends

P80001	SSA80CA00TT	80
P80101	SSB10CA00TT	100
P80201	SSB15CA00TT	150
P80301	SSB20CA00TT	200
P82734	SSB25CA00TT	250
P82765	SSB30CA00TT	300



Walseley code	Supplier code	Size mm
---------------	---------------	---------

##### Concentric Tapers

P80132	SSB10VE0ETT	100-80
P80232	SSB15VE0ETT	150-80
P80231	SSB15VE0FTT	150-100
P80330	SSB20VE0JTT	200-150
P82748	SSB25VE0JTT	250-150
P82749	SSB25VE0KTT	250-200
P82767	SSB30CD00TT	300-250



##### 45° Bends

P80002	SSA80CB00TT	80
P80102	SSB10CB00TT	100
P80202	SSB15CB00TT	150
P80302	SSB20CB00TT	200
P82735	SSB25CB00TT	250
P82766	SSB30CB00TT	300



##### Equal Tees

P80010	SSA80TE0ETT	80
P80110	SSB10TE0FTT	100
P80210	SSB15TE0JTT	150
P80310	SSB20TE0KTT	200
P82741	SSB25TE0LTT	250
P82774	SSB30TE0MTT	300



##### 22.5° Bends

P80004	SSA80CD00TT	80
P80104	SSB10CD00TT	100
P80203	SSB15CD00TT	150
P80304	SSB20CD00TT	200
P82736	SSB25CD00TT	250
P82767	SSB30CD00TT	300



##### F on Double Socket Tees

P80021	SSA80UD1ETT	80-80
P80122	SSB10UD1ETT	100-80
P80121	SSB10UD1FTT	100-100
P80222	SSB15UD1ETT	150-80
P80223	SSB15UD1FTT	150-100
P80322	SSB20UD1ETT	200-80
P80323	SSB20UD1FTT	200-100
P82742	SSB25UD1ETT	250-80
P82743	SSB25UV1FTT	250-100
P82775	SSB30UD1ETT	300-80
P82776	SSB30UV1FTT	300-100

##### 11.25° Bends

P80005	SSA80CE00TT	80
P80105	SSB10CE00TT	100
P80205	SSB15CE00TT	150
P80305	SSB20CE00TT	200
P82737	SSB25CE00TT	250
P82768	SSB30CE00TT	300



##### Duckfoot Bends

P80006	SSA80CF00TT	80
P80106	SSB10CF00TT	100
P80206	SSB15CF00TT	150
P80306	SSB20CF00TT	200
P82738	SSB25CF00TT	250
P82769	SSB30CF00TT	300



## Natural Flanged Fittings

### Natural Flanged Fittings

Wolsey code	Supplier code	Size mm
-------------	---------------	---------

#### 90° Bends

P80050	BBA80CA10TT	80
P80150	BBB10CA10TT	100
P80250	BBB15CA10TT	150
P80350	BBB20CA20TT	200
F80021	BBB25CA20TT	250
F80025	BBB30CA20TT	300



#### 45° Bends

P80051	BBA80CB10TT	80
P80151	BBB10CB10TT	100
P80251	BBB15CB10TT	150
P80351	BBB20CB20TT	200
F80022	BBB25CB20TT	250
F80026	BBB30CB20TT	300



#### 22.5° Bends

P80053	BBA80CD10TT	80
P80153	BBB10CD10TT	100
P80253	BBB15CD10TT	150
P80353	BBB20CD20TT	200
F80023	BBB25CD20TT	250
F80027	BBB30CD20TT	300



#### 11.25° Bends

P80054	BBA80CE10TT	80
P80154	BBB10CE10TT	100
P80254	BBB15CE10TT	150
P80354	BBB20CE20TT	200
F80024	BBB25CE20TT	250
F80028	BBB30CE20TT	300



#### Equal Tees

P80059	BBA80TE1ETT	80
P80159	BBB10TE1FTT	100
P80259	BBB15TE1JTT	150
P80359	BBB20TE2KTT	200
F80072	BBB25TE2LTT	250
F80078	BBB30TE2MTT	300



Wolsey code	Supplier code	Size mm
-------------	---------------	---------

#### Concentric Tapers

P80161	BBB10VE1ETT	100-80
P80262	BBB15VE1FTT	150-100
P80363	BBB20VE2JTT	200-150
F80052	BBB25VE2KTT	250-200
F80057	BBB30VE2LTT	300-250



#### Duckfoot Bends

P80058	BBA80CF10TT	80
P80158	BBB10CF10TT	100
P80258	BBB15CF10TT	150
P80358	BBB20CF20TT	200
P82751	BBB25CF20TT	250
P82751	BBB30CF20TT	300



#### Blank Flanges

P80087	186646	80
P80187	186661	100
P80287	BBB15QN10TT	150
P80387	BBB20QN20TT	200
F80033	BBB25QN20TT	250
F80034	BBB30QN20TT	300



#### Riser pieces, 150mm long

P80070	BBA80MT1ZTT	80
P80170	BBB10MT1ZTT	100
P80270	BBB15MT1ZTT	150
F80091	BBB20MT2ZTT	200



#### Riser pieces, 200mm long

P80071	BBA80MT1VTT	80
P80171	BBB10MT1VTT	100
F80088	BBB15MT1VTT	150
F80092	BBB20MT2VTT	200



# Saint-Gobain PAM

## Ductile Iron Pipe & Fittings

### Classic Pipe Range

Large diameter pipe system dedicated to potable water applications. The Classic range is available in diameters DN 900 to DN 2000 and offers a high degree of protection against the majority of soil conditions.

- Eco friendly – recycled and infinitely recyclable
- Approved for potable water under regulation 31.4.a
- WRAS approved
- Kitemarked to EN545

Wolseley code	Supplier code	Size mm	Length mm
<b>Pipes</b>			
W13846	SSB70G70	700	6000/6960
W13846	SSB80G70	800	6950



## Tonnes of sand and aggregates



*Civils page 286*

## Integral Push-Fit Pipes – Sewer Application

For sewerage and wastewater applications Saint-Gobain PAM UK offers a comprehensive range of Ductile Pipes & Fittings. The Integral range is available in diameters DN80 to DN1000 and features a new high performance external coating BioZinalium, a zinc/aluminum alloy enriched with copper and red aquacoat paint for DN80 to 300 and Zinalium, a zinc/ aluminum alloy plus red epoxy for DN350 to DN1000. All fittings are coated internally and externally with red epoxy.



Walseley code	Supplier code	Size mm
<b>Integral BioZinalium Push-fit Pipe, 6m long</b>		
P75493	TSA80E60BP	80
P75494	TSB10E60BP	100
BD2423	TSB15E60BP	150
BD2424	TSB20E60BP	200
BD2425	TSB25E60BP	250
BD2426	TSB30E60BP	300



### Push-Fit Gaskets (Nitrile)

P83088	JSA80BB	80
P83565	JSB10BB	100
P83579	JSB15BB	150
P83089	JSB20BB	200
P83090	JSB25BB	250
P83091	JSB30BB	300

Can't find  
what you're  
looking for?



Speak to one of our team today on 0344 2511 999

# Saint-Gobain PAM

## Ductile Iron Pipe & Fittings

### Integral Fabricated Pipes

Wolseley code	Supplier code	Size mm
---------------	---------------	---------

#### 90° Bends

P82798	TSA80CA	80
P83556	TSB10CA	100
P83569	TSB15CA	150
P83584	TSB20CA	200
P83599	TSB25CA	250
P83615	TSB30CA	300



Wolseley code	Supplier code	Size mm
---------------	---------------	---------

#### Concentric Tapers

P83566	TSB10VE0E	100-80
P83580	TSB15VE0E	150-80
P83581	TSB15VE0F	150-100
P83596	TSB20VE0J	200-150
P83612	TSB25VE0K	250-200
P83630	TSB30VE0L	300-250



#### 45° Bends

P82799	TSA80CB	80
P83557	TSB10CB	100
P83570	TSB15CB	150
P83585	TSB20CB	200
P83600	TSB25CB	250
P83616	TSB30CB	300



#### Equal Tees

P82802	TSA80TE0E	80
P83561	TSB10TE0F	100
P83574	TSB15TE0J	150
P83590	TSB20TE0K	200
P83606	TSB25TE0L	250
P83623	TSB30TE0M	300



#### 22.5° Bends

P82800	TSA80CD	80
P83558	TSB10CD	100
P83571	TSB15CD	150
P83586	TSB20CD	200
P83601	TSB25CD	250
P83617	TSB30CD	300



#### F on Double Socket Tees

P82803	TSA80UD1E	80-80
P83562	TSB10UD1E	100-80
P83563	TSB10UD1F	100-100
P83575	TSB15UD1E	150-80
P83576	TSB15UD1F	150-100
P83591	TSB20UD1E	200-80
P83592	TSB20UD1F	200-100
P83607	TSB25UD1E	250-80
P83608	TSB25UD1F	250-100
P83624	TSB30UD1E	300-80
P83625	TSB30UD1F	300-100

#### 11.25° Bends

P82801	TSA80CE	80
P83559	TSB10CE	100
P83572	TSB15CE	150
P83587	TSB20CE	200
P83602	TSB25CE	250
P83618	TSB30CE	300

#### Duckfoot Bends

BA4293	SSA80CF00FF	80
BA4347	SSB10CF00FF	100
W13847	SSB15CF00FF	150
W13848	SSB20CF00FF	200
W13849	SSB25CF00FF	250
W13850	SSB30CF00FF	300

## Integral Flanged Fittings

Wolseley code	Supplier code	Size mm
---------------	---------------	---------

### 90° Bends

P83637	BBA80CA10FF	80
P83658	BBB10CA10FF	100
P83682	BBB15CA10FF	150
P83704	BBB20CA20FF	200
P83728	BBB25CA20FF	250
P83754	BBB30CA20FF	300



### 45° Bends

P83638	BBA80CB10FF	80
P83659	BBB10CB10FF	100
P83683	BBB15CB10FF	150
P83705	BBB20CB20FF	200
P83729	BBB25CB20FF	250
P83755	BBB30CB20FF	300



### 22.5° Bends

P83639	BBA80CD10FF	80
P83660	BBB10CD10FF	100
P83684	BBB15CD10FF	150
P83706	BBB20CD20FF	200
P83730	BBB25CD20FF	250
P83756	BBB30CD20FF	300



### 11.25° Bends

P82801	TSA80CE	80
P83559	TSB10CE	100
P83572	TSB15CE	150
P83587	TSB20CE	200
P83602	TSB25CE	250
P83618	TSB30CE	300



### Equal Tees

P83643	BBA80TE1EFF	80
P83666	BBB10TE1FFF	100
P83690	BBB15TE1JFF	150
P83713	BBB20TE2KFF	200
P83738	BBB25TE2LFF	250
P83765	BBB30TE2MFF	300



Wolseley code	Supplier code	Size mm
---------------	---------------	---------

### Concentric Tapers

P83671	BBB10VE1EFF	100-80
P83695	BBB15VE1FFF	150-100
P83719	BBB20VE2JFF	200-150
P83744	BBB25VE2KFF	250-200
P83773	BBB30VE2LFF	300-250



### Duckfoot Bends

P83641	BBA80CF10FF	80
P83662	BBB10CF10FF	100
CA0635	BBB15CF10FF	150
P83708	BBB20CF20FF	200
P83732	BBB25CF20FF	250
P83758	BBB30CF20FF	300



### Blank Flanges

P83652	BBA80QN10FF	80
P83676	TBB10QN10FF	100
P83701	TBB15QN10FF	150
P83726	BBB20QN20FF	200
P83751	BBB25QN20FF	250
P83780	BBB30QN20FF	300



### Riser pieces, 150mm long

P83633	BBA80MT1ZFF	80
P83653	BBB10MT1ZFF	100
P83677	BBB15MT1ZFF	150



### Riser pieces, 200mm long

P83633	BBA80MT1ZFF	80
P83653	BBB10MT1ZFF	100
P83677	BBB15MT1ZFF	150



# Saint-Gobain PAM

## Ductile Iron Pipe & Fittings

### Valves / Accessories / FH2 Underground Fire Hydrants

#### Gate Valves

The Gateway resilient seated gate valve is fully compliant to BS EN 1074-2 and BS5163-1. Its lightweight design constructed in ductile iron offers a robust and durable valve. The valve is suitable for use in potable water systems and buried service. Available options:

- Cap top operated
- Handwheel operated
- Clockwise close & anti-clockwise close

Wolseley code	Supplier code	DN mm
PN16 clockwise		
K84868	190559	50
K84870	190561	80
K84871	190563	100
K84873	190565	150
K84874	190567	200
K84875	221863	250
K84876	190571	300

For PN10 and ACC consult us.



#### Accessories

Wolseley code	Supplier code	DN mm
H-w clockwise		
K10109	209158	50-150
K10112	205971	200-300



#### FH2 Underground Fire Hydrant DN80 BS750 – Type Loose Stopper and Fixed Stopper

Wolseley code	Supplier code	Mass kg
Fixed Stopper Standard Design		
K84891	230709	14.2





## Appendix

### Air Valve

The triple function high flow (430 m<sup>3</sup>/h) and low flow (5 m<sup>3</sup>/h) is available in DN80, DN100 & DN150.

Maxi pressure 16 bar. Flange ISO NP10.

- Functions of the air valve :
  1. Air outlet with high flow : pipeline filling
  2. Air blowing-off in pressure : pipeline in normal service
  3. Air inlet with high flow : pipeline draining
- The air valve protects the pipeline by the air extraction in the pipelines high points
- The valve body, in mechanically-welded steel, is protected by oven-baked epoxy-resin thickness 200 microns. The mobile clapper/float assembly is entirely made from plastic material, neutral to any corrosive aggression by the waste water

The use of sewage air valves is economic for the pipeline installation. By using air valves, the pipeline can follow the ground relief and avoid the cost of the necessary construction works to follow a regular pipeline profile.

DN mm	High flow m <sup>3</sup> /h	Low flow m <sup>3</sup> /h	A mm	H mm	D mm	d female inches	P inches	Mass kg	References
50-60-65	600	2,2	220	585	185	1	Purge/Nozzle ¾	28	238030
80	940	2,2	274	685	200	1½	Purge/Nozzle ¾	28	161771
100	940	2,2	274	685	220	2	Purge/Nozzle ¾	32	RCB10ERBF
150	2400	5	356	750	285	3	Purge/Nozzle ¾	45	RCB15ERBF
200	2400	5	356	970	340	3	Purge/Nozzle ¾	60	RCB20ERBF



# Saint-Gobain PAM

## Ductile Iron Pipe & Fittings

### Appendix – Continued

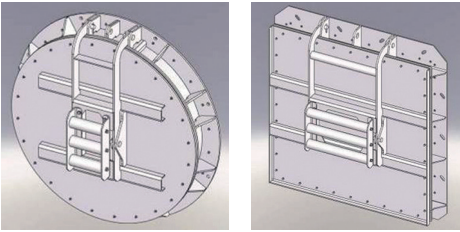
#### Flap Valve Stainless steel 304L

##### Description

The stainless steel 304L flap valves are mechanical equipment with an horizontal axis with a gate. They are designed for control downstream and upstream flows.

The range is available in round version and square version. Round version: DN80 to 2000 (on concrete wall or with flanges), square version L=80x80 to L=2000x2000.

The round valve can be installed on flange PN10 or on a concrete wall.  
The square valve can be installed directly on the concrete wall.



DN / L x L	Circular Flap		Square Flap to wall
	To Wall	To flange PN10	
80 - 2000	<p>With screws</p>	<p>Without screws</p>	

## Appendix – Continued

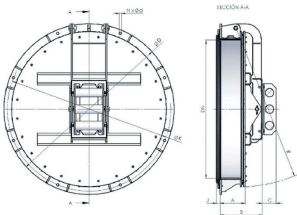
### Dimensions and mass

DN mm	Ø D mm	Ø K mm	Ø d mm	N mm	A mm	B mm	C mm	J mm	R mm	Mass kg	References
<b>Round Flap Valve with Universal Flange (installation on concrete wall)</b>											
80	200	160	10	4	128	170	–	–	195	7,5	232179
100	220	180	10	4	128	170	–	–	215	8,5	232181
150	285	240	10	4	128	208	–	–	260	15,0	232182
200	340	295	10	4	128	208	–	–	325	20,0	232183
250	395	350	10	6	128	208	–	–	355	26,0	232184
300	445	400	10	6	128	208	–	–	405	32,0	232187
350	505	460	10	6	128	208	–	–	470	38,0	232188
400	565	515	10	6	128	228	50	–	510	46,0	232190
450	615	565	12	8	128	228	50	–	570	62,0	232192
500	670	620	12	8	128	228	50	–	610	74,0	232193
600	780	725	12	8	128	228	50	20	725	84,0	232195
700	895	840	12	8	128	228	50	20	815	106,0	232198
800	1015	950	12	8	128	228	80	20	920	124,0	232200

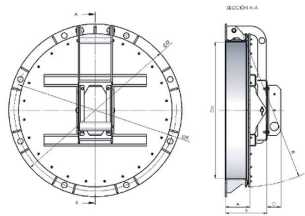
References include necessary bolts. Counterweights are not included.

DN mm	Ø D mm	Ø K mm	Bolts	N mm	A mm	B mm	C mm	J mm	R mm	Mass kg	References
<b>Round Flap Valve for PN10 Flange Connection</b>											
80	200	160	M10 x 55	4	128	170	–	20	195	8,0	236139
100	220	180	M10 x 55	8	128	170	–	20	220	9,0	236140
150	285	240	M10 x 60	8	128	208	–	22	260	16,0	236151
200	340	295	M10 x 60	8	128	208	–	24	325	21,0	236152
250	395	350	M12 x 70	12	128	208	–	26	355	27,0	235838
300	445	400	M12 x 70	12	128	208	–	26	405	33,0	236154
350	505	460	M12 x 70	16	128	208	–	28	470	40,0	236155
400	565	515	M12 x 70	16	128	228	60	32	515	48,0	236156
450	615	565	M12 x 80	20	128	228	60	38	570	62,0	236157
500	670	620	M12 x 80	20	128	228	60	38	610	74,0	236158
600	780	725	M12 x 80	20	128	228	60	38	725	84,0	236160
700	895	840	M16 x 90	24	128	228	60	40	815	106,0	236161
800	1015	950	M16 x 90	24	145	245	80	44	920	136,0	236162

References do not include necessary bolts. Counterweights are not included.



Round Flap Valve with universal flange



Round Flap Valve for PN10 flange connection

# Saint-Gobain PAM

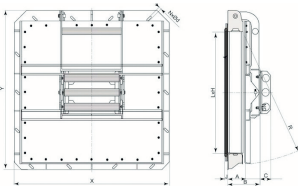
## Ductile Iron Pipe & Fittings

### Appendix – Continued

#### Dimensions and mass – Continued

(DN) L x H mm	X / Y mm	K mm	Ø d mm	N mm	A mm	B mm	C mm	J mm	R mm	Mass kg	References
Square Flap Valve (installation on concrete wall)											
80 x 80	280 x 310	15	10	4	130	215	–	–	230	25,0	232768
100 x 100	300 x 330	15	10	4	130	215	–	–	250	30,0	232769
150 x 150	350 x 380	15	10	8	130	215	–	–	300	40,0	232770
200 x 200	400 x 430	15	10	8	130	215	–	–	350	45,0	232772
250 x 250	450 x 480	15	12	8	130	215	–	–	400	50,0	232773
300 x 300	500 x 430	15	12	12	130	215	–	–	450	55,0	232775
350 x 350	550 x 580	15	12	12	130	215	–	–	500	60,0	232777
400 x 400	600 x 630	15	12	12	130	215	60	–	580	65,0	232778
450 x 450	650 x 680	15	12	12	130	215	60	–	630	70,0	232779
500 x 500	720 x 750	25	12	12	130	215	60	20	380	85,0	232780
600 x 600	820 x 850	25	12	14	130	215	60	20	890	105,0	232781
700 x 700	920 x 950	25	16	14	130	215	60	20	880	120,0	232782
800 x 800	1020 / 1050	25	16	14	150	215	80	20	980	135,0	232783

References include necessary bolts. Counterweights are not included.



Square Flap Valve

## Looking for PE pipe systems?



Utilities pages 7-24