



**RELIABLE AND
QUICK INSTALLATION**

CLICKFIT

FLATFIX



Inhoudsopgave

- 4** Foreword
- 6** Esdec, building value for solar professionals
- 8** ClickFit & FlatFix
- 10** ClickFit EVO
- 14** ClickFit EVO Tiled Roof
- 16** ClickFit EVO Steel Roof
- 18** ClickFit EVO Corrugated roof
- 20** ClickFit EVO Standing seam roof
- 22** ClickFit EVO ClickFit EVO EPDM & bitumen roof and Mediterranean tiled roof
- 24** ClickFit EVO Slate roof
- 26** FlatFix Fusion
- 30** FlatFix Fusion Landscape
- 34** FlatFix Fusion Portrait
- 36** Accessories
- 42** Services
- 46** Sustainability and reliability
- 48** Article list



10



28



44

FOREWORD

For Esdec, 2024 is a special year; 20 years ago, our organisation was founded on the vision of making the installation of solar panels faster and easier. By installers, for installers. From the very first moment, we have been actively contributing to the transition to sustainable solar energy for generations to come. In the Benelux, Esdec has become the market leader and as part of Enstall, are even worldwide!

Special milestones

I would like to highlight some special milestones we have achieved over the years. The introduction of FlatFix Fusion for flat roofs, for example. The modular and flexible system has proven itself over many years. Then within our product line for pitched roofs, the EVO concept for ClickFit, which allows all common solar modules to be installed with only four standard components. These concepts are continuously developed further in application possibilities and extended with smart accessories to simplify installation even further.

Partly due to the explosive growth in the solar market, Esdec has developed significantly since its foundation. Every day, we work on further optimising our FlatFix and ClickFit product lines. We continuously expand our portfolio so that we can optimally anticipate the local situation in Europe.

Extensive development

Our ambition lies not only in developing good mounting systems, but also in everything that simplifies the installer's work. Therefore, in recent years we have set up an extensive training programme with product training courses, webinars and e-learnings. We bundle all these services in our new online portal that provides access to existing tools, such as the Esdec Calculator and the Esdec Academy, and our latest app Esdec OnSite.

Esdec's goal remains to accelerate solar installation. That energy transition continues to be a hot topic is beyond dispute. We are doing everything we can together to build a sustainable future. Our motto will stay unchanged: building value for solar professionals. I look forward to the next 20 years in which we will work together for a more sustainable world.



Harm Haarlink

Managing Director

The sun. An inexhaustible source of energy that we can quickly unleash. So that's what we are doing, massively. Through the roofs of our homes and businesses. All over the world. And in our view, this can always be done smarter, faster and simpler. Just by making things more intelligent from the start. Based on this vision, we develop smart mounting systems for solar panels that create less hassle and more value for solar professionals. Ever since 2004, when Esdec was founded.

Our systems consist of light, solid components that make mounting solar panels simpler and faster. With interchangeable parts that can be mounted safely and conveniently. Always with only a minimum number of actions. So we have significantly reduced assembly time and facilitate error-free installation.

And we go beyond developing innovative mounting systems. We help solar professionals in a few digital steps with a technical proposal, smart project support, and free accessible education and training. Online, on site or at our Innovation Centre in Deventer. With these services, we take away as much hassle as possible and create extra value. That this vision pays off is shown by the fact that over 12,000 installers in more than 20 countries now see Esdec as their partner in installation systems.

BUILDING VALUE⁺ FOR SOLAR PROFESSIONALS

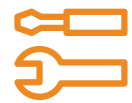
With 20 years of experience and over 11 GW of installed solar panels, we can call ourselves the international market leader.





MOUNTING SOLAR PANELS. THAT CAN BE DONE SMARTER, FASTER AND EASIER.

This is proven by the ClickFit mounting systems for pitched roofs and FlatFix for flat roofs.



EASY INSTALLATION

All mounting systems have been developed with the installer's convenience in mind.



MAXIMUM TIME SAVINGS

The mounting systems can be installed in just a few steps, which saves time.



LESS RISK

Our mounting systems are extensively tested and meet the strictest safety requirements, protecting against damage and leakage.



MINIMUM NUMBER OF TOOLS REQUIRED

Thanks to the smart techniques and the small number of components, the installer does not need a lot of tools.



WARRANTY

Our products are made of high-quality materials and are extensively tested. Esdec therefore gives a 20-year product guarantee on our mounting systems.

The logo for ClickFit EVO, featuring the brand name in white on a dark blue background.The word 'EVO' in white on an orange background.

CLICKFIT EVO, ONE SOLUTION FOR ALL PITCHED ROOFS

Whether you mount on roof tiles, corrugated sheets, steel roofs, Mediterranean tile roofs, slate roofs or EPDM and bitumen roofs; the ClickFit EVO range always offers a quick and reliable solution.



The ClickFit EVO system has a smart click connection and consists of only four components, regardless of the type of pitched roof. This makes installation extra easy as you save in tools, number of handlings and time.



FOUR COMPONENTS

1. ROOF ATTACHMENT

Varies according to roof type and situation



Universal roof hook

2. MOUNTING RAIL

Mounting rails for all types of pitched roofs are quick and easy to install by clicking instead of screwing.



Mounting rail

3. MODULE CLAMPS

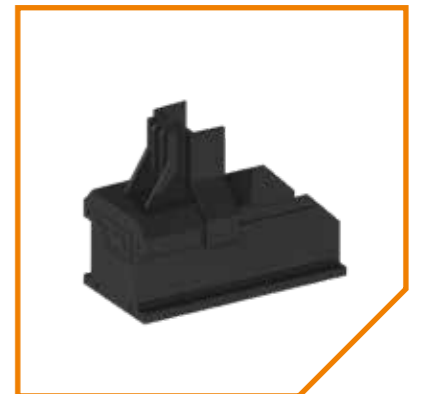
Module clamps are height-adjustable and therefore suitable for solar panels with a frame thickness between 30 and 50 mm. These universal module clamps are supplied assembled as standard in grey or black, include bonding and can be used as middle and end clamps in combination with the end cap.



Module clamp

4. END CAP

For a stylish and wind-tight finish, available with and without clamp support in grey and black.



End cap

For the tiled roof, Esdec offers several solutions so that you can always choose the product which best suits your roof. The universal roof hook allows easy installation without drilling into the roof structure. If you prefer screwing, use the truss hook.

Universal roof hook

- Infinitely adjustable in height
- Fastening by clamps
- Vertical and horizontal mounting possible by self-aligning, rotating click connection
- Integrated cable management
- The LT variant is also resistant to extra-cold processing temperatures (-5°C)
- Magnelis coating for additional corrosion protection



Universal roof hook



Truss hook

- Fastening by screwing to the roof structure
- Continuously height-adjustable
- Vertical and horizontal mounting possible through self-aligning, rotatable click connection
- Integrated cable management
- Magnelis coating for additional corrosion protection



Truss hook

STEEL ROOF

The smart mounting system for steel roofs consists of mounting profiles with pre-punched holes and a pre-glued EPDM rubber. It saves you a lot of work and the EPDM rubber guarantees watertightness. With the self-tapping screw, you attach the mounting profiles directly to the trapezoidal or corrugated steel roof.

Self-tapping screw

- No pre-drilling required*
- Underlying roof construction remains intact
- Multihead screw T30 and SW10

**If you choose to install with blind rivets, you need to pre-drill the roof (6.5 mm)*



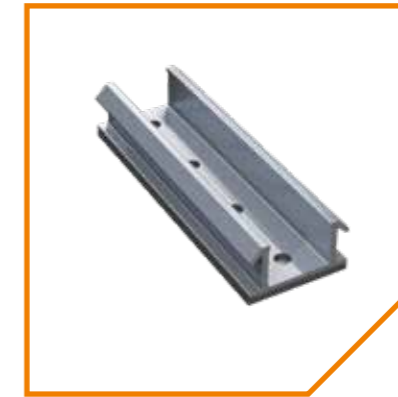
Self-tapping screw



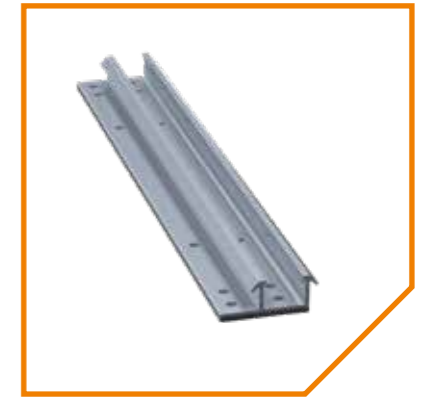
You can choose between a low and high mounting profile. With both profiles, positioning of solar modules in landscape and portrait is possible.

Low mounting profile

- Positioned close to the roof for an aesthetic look



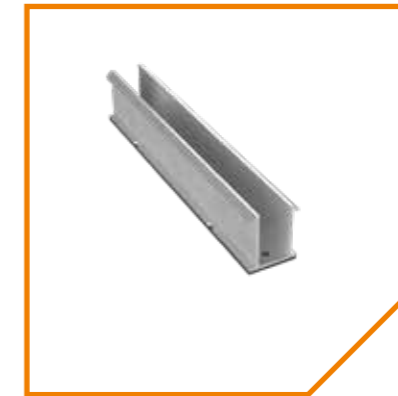
Low mounting profile landscape



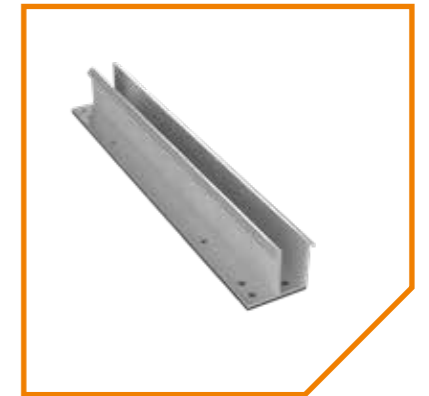
Low mounting profile portrait

High mounting profile

Suitable for positioning large optimisers and micro-inverters under the modules



High mounting profile landscape



High mounting profile portrait

Adapterprofilen

For landscape mounting on the corrugated steel roof, Esdec has developed EPDM adapter profiles. Thus, with the mounting profiles you mount solar panels on any corrugated steel roof in both portrait and landscape.



Adapter profiles corrugated steel roof 'Low' landscape



Adapterprofil corrugated steel roof 'High' landscape

Hanger bolt

For all other steel roofs, use the multifunctional hanger bolt. This screw is delivered fully assembled. Thanks to the flexible adapter, you quickly and easily catch roof irregularities of up to 10 degrees. The universal, rotatable and self-aligning click connection allows for mounting the solar modules in landscape and portrait. You use the familiar components (universal rails, module clamp and end caps) from the ClickFit EVO line. In addition to the steel roof, this strut screw is also suitable for corrugated sheet, EPDM, bitumen and Mediterranean tile roofs.

The mounting bracket is the ideal solution especially for corrugated roofs such as those often seen in the agricultural sector. The mounting system can be used on existing and new-build roofs.

Mounting bracket

For wave type 177/51, you choose the mounting bracket. This is attached to roof plate screws in the underlying purlins. You therefore use existing screws, which saves time and hardly affects the roof structure.



Corrugated mounting bracket



The bracket leans on the valleys of the corrugation of the sheet and locks precisely around the high part of the corrugation. Eternit, a leading manufacturer of corrugated sheet products, has extensively tested and approved the mounting bracket. It therefore bears the quality seal 'Eternit approved'.



- Continuously adjustable in height
- Even pressure distribution
- Less point load
- Self-aligning click connection
- Mounting rail can only be placed vertically
- Integrated cable management
- Magnelis coating, giving it extra protection against corrosion

If you have a different wave type, use the multipurpose stick screw. This screw is also suitable for steel, EPDM, bitumen and Mediterranean roofs.



Hanger bolt



Esdec has a suitable clamp for the most common types of standing seam roofs, for single or double-folded standing seam, click and round standing seam roofs. The patented S-5! Clamps are the basis for our mounting system. Depending on the type of seamer, you choose the matching clamp on which the click connection is already mounted. All you have to do is screw the clamp onto the standing seam using the torx screw.

The standing seam clamps do not perforate the roof, leaving it intact and watertight. When the rails are mounted horizontally over the standing seam, the high rigidity of the system is exploited to the full. This makes it possible to skip the standing seam in some cases, saving installation time and costs.

- - Fully assembled
- - Roof remains intact
- - Vertical and horizontal installation possible through swivel click connection
- - Self-aligning click connection
- - Magnelis coating, providing extra protection against corrosion



Round seam clamp 23mm



Double folded seam clamp 9mm



Single folded seam clamp 14mm





EPDM AND BITUMEN ROOF



ARABIC TILES

The multifunctional hanger screw is the ideal solution for installing solar panels on existing and new pitched EPDM and Bitumen roofs, as you often find on commercial and residential properties. The hanger screw is also suitable for Mediterranean tile roofs. Before starting installation, the substructure of the roof should be carefully examined. A different substructure requires different working methods. Moreover, the thermal performance and water tightness of the roof are important considerations. Therefore, for an EPDM or bitumen roof, use an underlay disc and a sealant, for the Mediterranean tile roof grab a chemical anchor.



For a trouble-free installation, we recommend that you read the specifications carefully and seek advice from a roofing specialist.

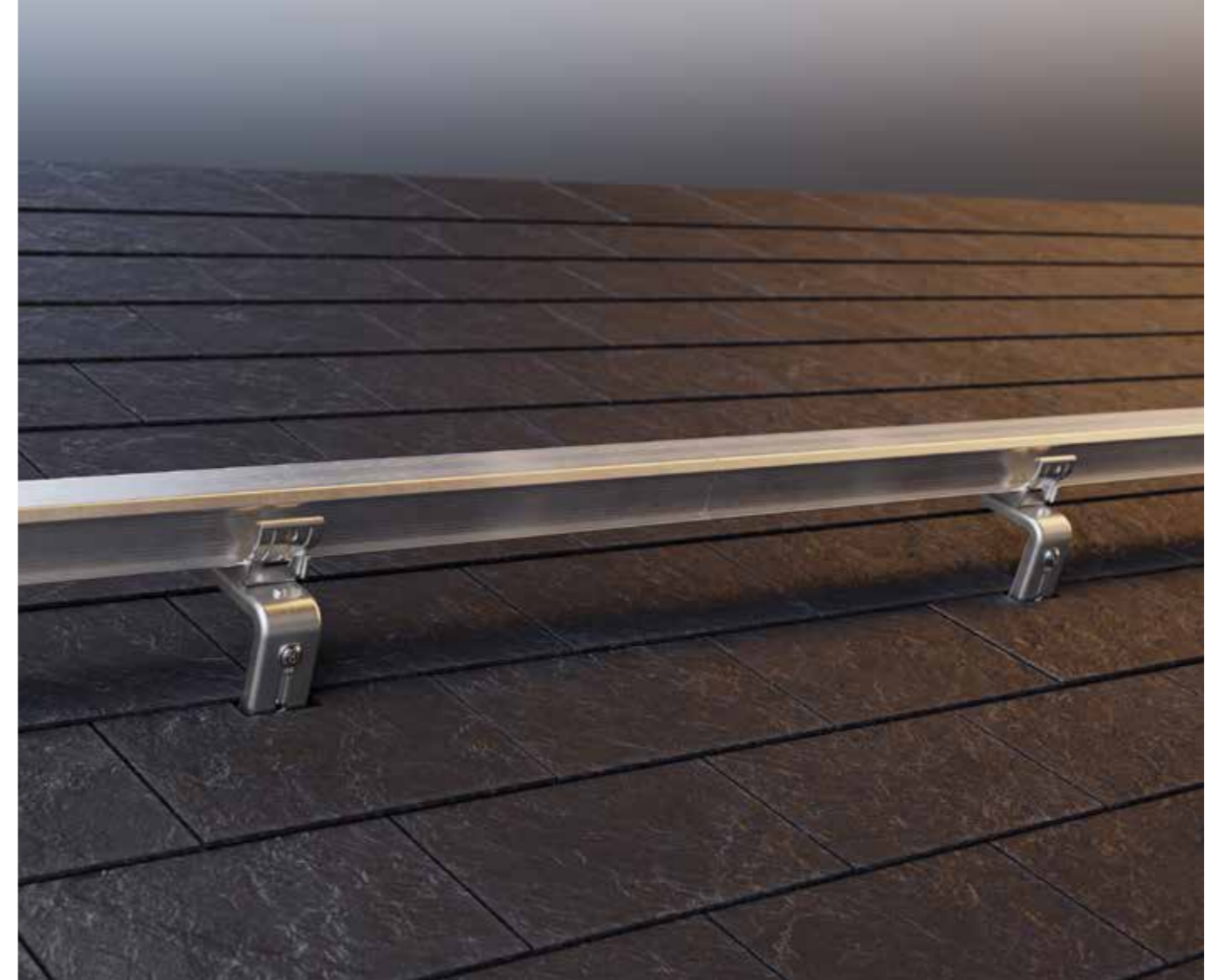
Multi-purpose hanger bolt

- Fully pre-assembled
- Height adjustable
- Can be rotated 360 degrees
- Covers roof unevenness of up to 10 degrees
- Self-aligning click connection
- Vertical and horizontal mounting possible through rotatable click connection
- Landscape and portrait positioning of the solar modules
- Available in three lengths and two thicknesses for wooden purlins/trusses
- Integrated cable management
- Coating by Magnelis, providing additional protection against corrosion



Hanger bolt

Esdec has developed an extra flat hook with a thickness of only 4 mm especially for slate roofs. This makes this hook excellent for installation on most slate roofs with a substructure of rafters, battens, solid wood or concrete. The roof hook has a convenient slotted hole to choose the position of the screw and minimise the risk of splitting the wood. It is advisable to contact a slate specialist in your preparation as specific knowledge of slate roofs is required to get them properly watertight again after installation of the mounting system.

**Extra flat slate roof hook**

- Completely pre-assembled
- With handy slotted hole
- Infinitely adjustable in height
- Self-aligning click connection
- Vertical and horizontal mounting possible
- Landscape and portrait positioning of the solar panels
- Integrated cable management
- Magnelis coating, providing extra protection against corrosion

*Slate roof hook*

An aerial view of a flat roof covered with solar panels. The panels are arranged in a grid pattern, with several HVAC units and chimneys interspersed. The roof is surrounded by a concrete parapet wall. The solar panels are tilted at a slight angle, and the overall layout is designed to maximize space utilization around the existing roof structures.

FLATFIX

FUSION

FLATFIX FUSION FOR FLAT ROOFS

FlatFix Fusion is the flexible mounting system for solar panels on medium-sized and small roofs. Thanks to its modular character, a specific arrangement can be realised for each roof type. This makes it easy to build around obstacles such as chimneys and air conditioning units.

FLATFIX FUSION, THE VERSATILE CLICK SYSTEM FOR FLAT ROOFS

✓ USER-FRIENDLY SYSTEM

The smart, lightweight components allow flexible row lengths to be installed, making it easy to mount around obstacles such as chimneys or air conditioning units.

✓ DURABLE CLAMPING FORCE

Thanks to the high and low base, with a metal insert, the clamping force remains optimal even in more extreme weather conditions or after removing and reattaching panels for maintenance, for example.

✓ SMART CLICK CONNECTION

FlatFix Fusion mounting systems are modular and easy to install thanks to the unique click connection.



✓ THERMAL DECOUPLING

The roof covering is protected from damage thanks to a moving hinge that prevents friction between the base and the roof and also takes the shrinking and expansion of roofs into account.

✓ INTEGRATED CABLE MANAGEMENT

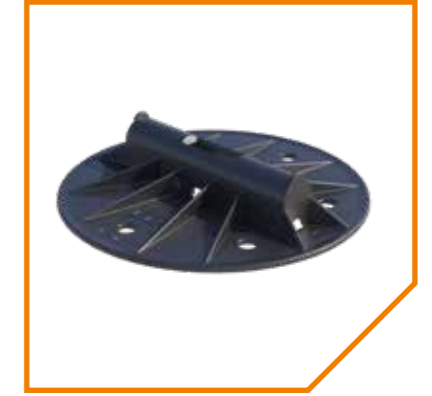
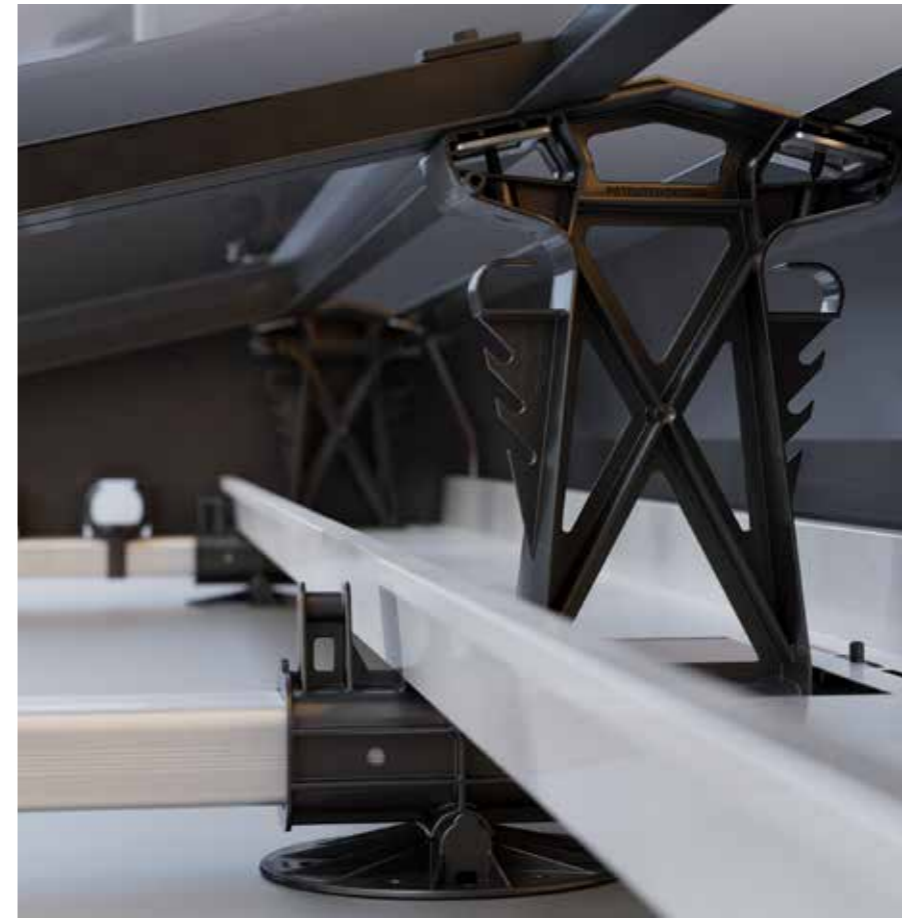
Cables are safely bundled and disposed of by the expandable cable outlets in the wind deflector and cable grommet.

- Landscape orientation in single or dual position, portrait orientation in single position
- Integrated bonding on mid clamps
- Extensively tested in accordance with international standards for example for fire safety, wind resistance and corrosion

LANDSCAPE

The various modular components of FlatFix Fusion are simple to click together and give you the option of installing flexible row lengths. Easy to install in single and dual arrangements so you get the maximum efficiency from any roof. FlatFix Fusion is a strong, lightweight system ideal for residential and smaller commercial projects.

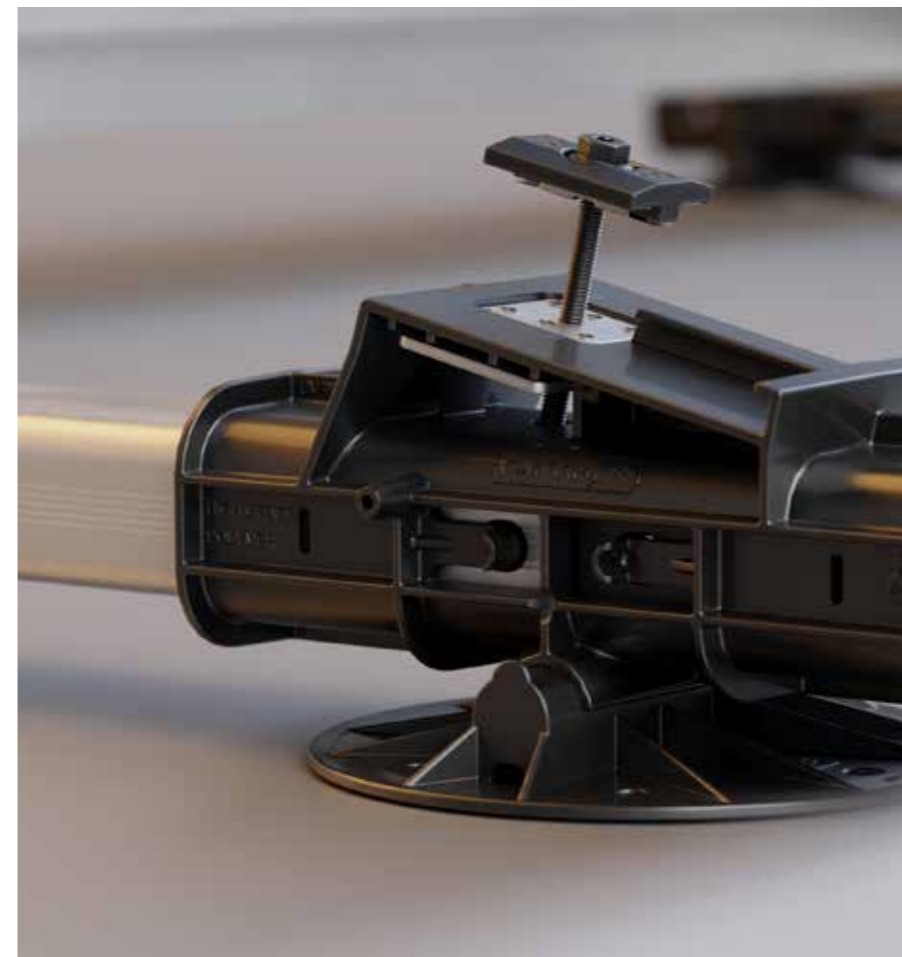
The base profiles are available in different sizes for maximum flexibility. To give the system sufficient weight, we use ballast. This can be placed in the ballast holder, strengthening the construction of the system.



Roof support



High Base Landscape



Base profile



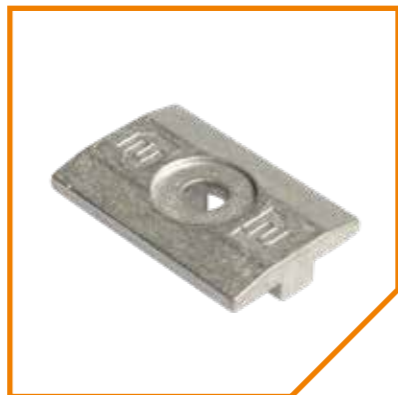
Low Base Landscape

LANDSCAPE

With the FlatFix Fusion middle and end clamps, you attach the solar panels to the system. The universal middle clamp ensures optimal bonding, clamping force and distance between the solar panels. The end clamp is attached to the high and low base at the end of the row of panels. As this end clamp is available in different heights, you always have one to match the thickness of the solar panel.



Ballast holder



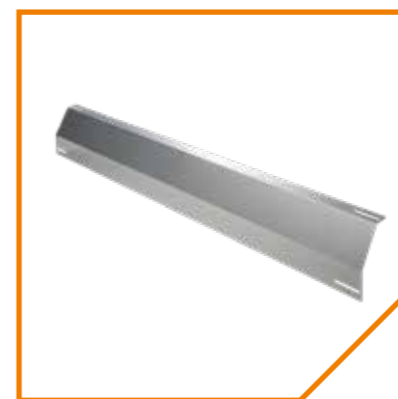
Universal mid clamp



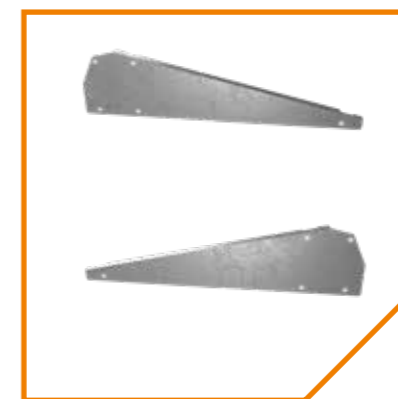
End clamp



The use of wind deflectors for the back and sides of the system ensure aerodynamic and aesthetic finishing of the system. The stabiliser connects the different segments in the width direction for extra strength in a dual arrangement.



Wind deflector rear



Wind deflector sides

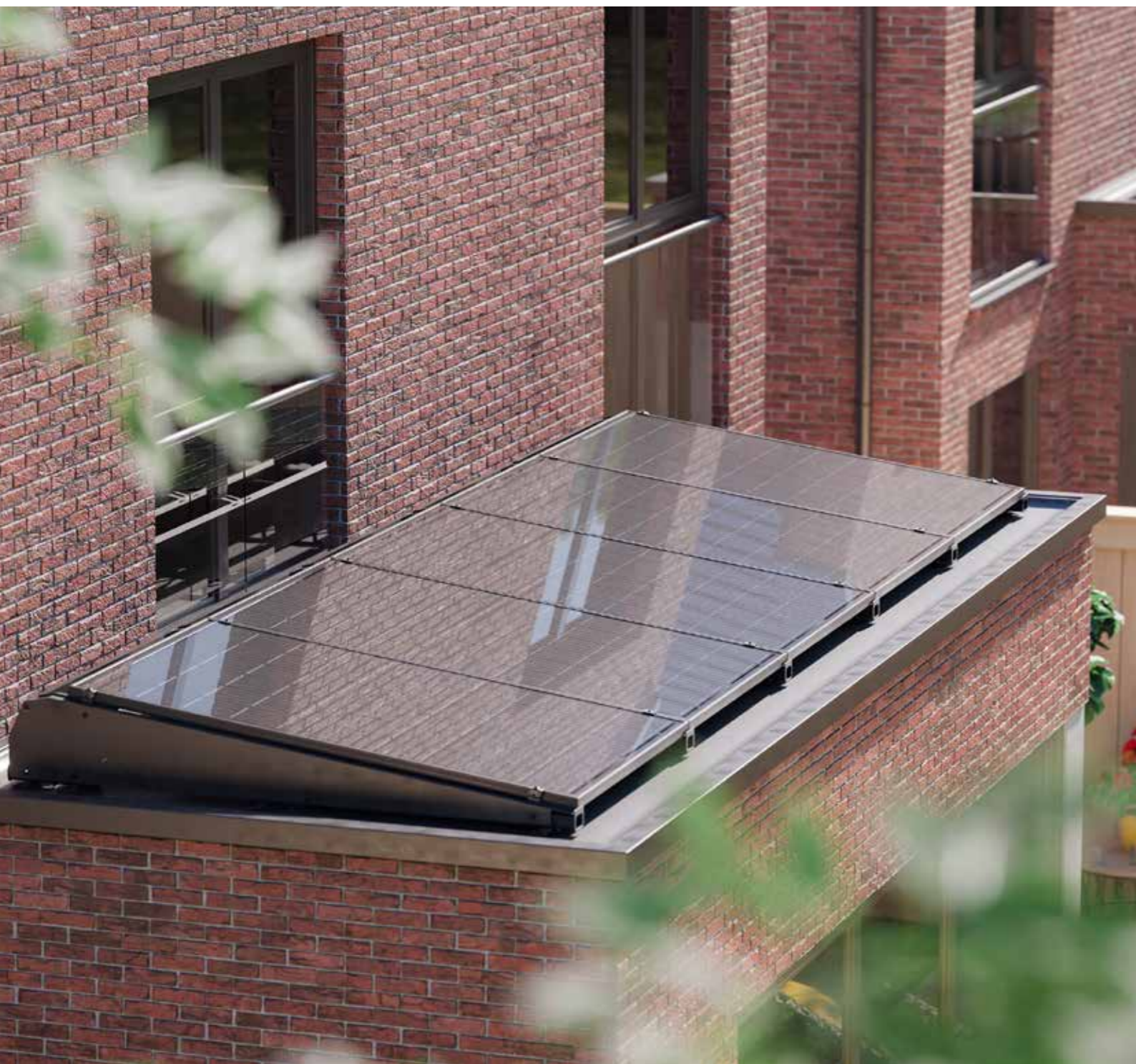


Stabiliser



PORTRAIT

If you want to further optimise the available space on small, flat roofs of an extension or carport, for example, then choose the portrait arrangement. On an extension of, for instance, 2.5 by 6 metres, this setup offers space for as many as 5 solar panels instead of 3.



High Base Portrait



Base profile



Low Base Portrait

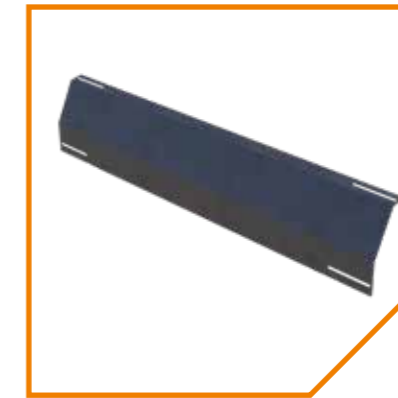


PORTRAIT

The product components are dimensionally adapted to the portrait setup, for maximum stability and optimum efficiency of the smaller roof area.



Wind deflector sides



Wind deflector rear

The use of wind deflectors for the back and sides of the portrait system provide an aerodynamic whole and an aesthetic finish.

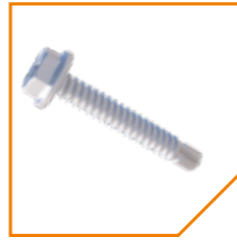


ACCESSORIES AND ADDITIONAL FASTENERS

In addition to all the basic supplies for the ClickFit and FlatFix systems, Esdec also offers the necessary accessories. With these accessories, the systems can be installed even faster and easier on almost all roof types.

CLICKFIT EVO AND FLATFIX FUSION FASTENERS

- The **self-drilling screw** 6.3x 42 mm SW10/T30 is needed to secure the rails when the rail is installed vertically, to prevent the rail from sliding down.
ClickFit EVO Tiled roof, Corrugated roof, Standing seam roof, EPDM and Bitumen roof, Mediterranean tiled roof and when grounding FlatFix Fusion
- The **self-tapping screw 6.0 x25 mm SW10 HEX/T30** makes pre-drilling unnecessary.
ClickFit EVO steel roof and FlatFix Fusion
- The **blind rivet** is used to install mounting profiles where pre-drilling is required.
ClickFit EVO Steel Roof
- These **mounting screws** are for fixing wind deflectors and clamps
FlatFix Fusion



NEW IN THE RANGE: MPLE CLIPS

The MLPE clips (Module-Level Power Electronics, which include optimisers and micro-inverters) ensure that external factors have less influence on the efficiency of the solar panels. For instance, shadows are better absorbed and if a solar panel fails, the entire series does not switch off immediately. The remaining panels still deliver the optimum yield.

With micro-inverters, the generated direct current is converted to alternating current and the voltage is converted to 230V, so that it is immediately usable in the house. This eliminates the need to hang a large inverter in the house to convert the generated power from all the panels to 230V AC at once.

Not all optimisers are the same and they also vary in weight. These MLPE clips offer a solution to properly and securely fix all types of optimisers to the rails.

- **ClickFit EVO MLPE clip - lightweight**

Optimisers or micro-inverters weighing up to 2 kilograms are easily clicked onto the rail using the lightweight MLPE clip.

- **ClickFit EVO MLPE clip - heavyweight**

Optimisers or micro-inverters from 2 to 8 kilograms are easily clicked onto the rail using the heavyweight MLPE clip.

- **FlatFix Fusion MLPE clip lightweight**

Optimisers or micro-inverters of up to 2 kilograms are easily clicked onto the rail with the lightweight MLPE clip.



ACCESSORIES CLICKFIT EVO (ALL ROOF TYPES)

- **Mounting rail connector**

Allows seamless connection of several mounting rails



- **Mounting aid with cable clip**

This attachment makes it easy to position the solar panels precisely on the rail



- **Screw bit Torx 30**

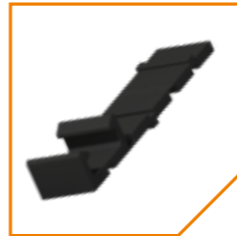
For quick and easy installation



ACCESSORIES TILED ROOF

- **Roof hook expansion rubber**

This rubber reduces the point load on the roof tile. In addition, it eliminates the need for grinding in roof tiles with a water barrier. The high-quality EPDM rubber has a balanced composition so that it does not dry out or crack. By folding the rubber, a gap of 5-15 mm can be filled.



ACCESSORIES STEEL ROOF

- **EPDM adapter profile layer**

With the use of this adapter, the low profile is also suitable for installation in landscape orientation



- **EPDM adapter profile high**

By using this adapter, the high profile is also suitable for installation in landscape orientation



ACCESSORIES EPDM, BITUMEN AND MEDITERRANEAN ROOF TILES

- **Stick screw washer stainless steel 80mm**

Used for bitumen roofs with a very soft base. By placing the stainless steel washer between the bitumen and the hanger screw, the weight is better distributed.



ACCESSORIES FLATFIX FUSION

- **Earthing spring**

Enables both high and low plastic base elements to be grounded. The earthing springs are inserted into the sides of the element before the base profiles are clicked onto the base elements.



- **Earthing clamp** (6 mm²)

With this clamp and a standard 6 mm² installation cable, it is simple to ground the solar modules. The earthing clamps are attached to each first or last solar panel of a row, or they are mounted on an end clamp. When attached, the teeth of the earthing clamps penetrate the anodising layer or coating of the solar panel and the sheathing of the earthing cable. The standard 6 mm² earth cable runs as a central cable along the solar panel to which all individual rows are connected.



- **Earthing angle bracket**

This makes it possible to ground the wind deflector or stabiliser. The grounding angle bracket is used to attach the wind deflectors to the base profiles.



- **Mat for TPO**

This mat increases friction resulting in lower ballast on smooth TPO.



- **Roof support adapter**

This adapter makes it possible to add base plates - where necessary - to reduce point loads. This adapter is clicked sideways onto the base connectors and also serves as a spacer for perimeter ballast.



- **Low base extension**

Allows wider solar panels to be installed with widths from 1,018mm to 1,053mm.



- **Cable entry guides**

This is attached to the base profile, which ensures that cables are safely fed through the side wind deflector without hitting the sharp edges of the side plate.



SERVICES

My Esdec

With just one account access to all the tools and services Esdec has to offer, that's MyEsdec. An online portal that provides access to existing tools such as the Esdec Calculator, the Esdec Academy, and our latest app Esdec OnSite. To make the required knowledge and skills accessible to everyone, the use of MyEsdec is free.



The screenshot shows the MyEsdec website dashboard. At the top, it says 'Welkom bij MyEsdec Peter' and 'Ontdek onze digitale diensten'. Below this is a 'Uitgelicht' section featuring 'Esdec OnSite - de app voor PV-installateurs ontworpen voor activiteiten op locatie'. The dashboard also includes sections for 'Esdec services' (Esdec Calculator, Esdec Academy, Esdec OnSite) and 'Enstall premium services' (Enstall OneFlow). The footer contains the ENSTALL and ESDC logos, along with 'Privacybeleid' and 'Algemene voorwaarden'.

Esdec OnSite

Esdec OnSite is an app specially designed to make the work of on-site installers easier. The app is a sort of digital logbook in which you document notes and manage checklists, among other things. The data entered is automatically integrated into the Esdec Calculator and from the Esdec Academy you receive personal advice on training courses to follow.



Esdec Calculator

Making a calculation for your solar project is easier than ever. This online calculation tool helps you complete this process as quickly, efficiently and successfully as possible. Within minutes, you will receive a tailored bill of materials and building plan. With the Esdec Calculator, you are not only assured of accurate calculations, you also save a lot of time in the design phase. All calculations are based on extensive testing and the latest safety standards. In addition, the tool takes into account the terrain category, snow load and wind zone, giving you accurate advice specific to your project.

In just four steps, you will calculate everything you need to know before the start of a new project:

1. Choose your location, roof type and solar panels
2. Draw the roof and any obstacles
3. The calculator automatically selects the most suitable mounting system
4. Download the bill of materials, construction and ballast plan immediately



Esdec Academy

Learn all about our mounting systems and how to work with them safely and smartly, where and when you want. With the Esdec Academy e-learning platform, you do this easily from home, the office or another location of your preference. Not only will you learn about our systems and their installation, you will also find various online learning modules on important related topics such as fire safety and storm resistance..



Training courses

During the training sessions at the Esdec Innovation Centre in Deventer, you will get to work on real roofs with our mounting systems. You can also follow a training course with your colleagues at a location of your choice. Then we will come to you with the Esdec Solar Bus. Whether you are an installation company that wants to train new employees or an organisation organising a customer event: the Esdec Solar Bus offers flexible, tailor-made training solutions. The online webinars are ideal for those with tight time constraints. In no more than an hour, you can learn all about the Esdec Calculator, for example, or topics such as safety, reliability and regulations from behind your own computer.



Learn how to work safely and smartly with our installation systems and become a Solar Hero. By registering for one of our training courses, you as a solar professional become a true ambassador for the sector, a nice mark of quality towards your customers.



SUSTAINABILITY AND RELIABILITY

Esdec is committed to sustainability, reliability and safety. We make conscious choices to ensure these elements in all aspects of our organisation. Think about the sourcing of raw materials, production methods, packaging, trading methods, etc... We also invest extensively in research and development every year.

Quality

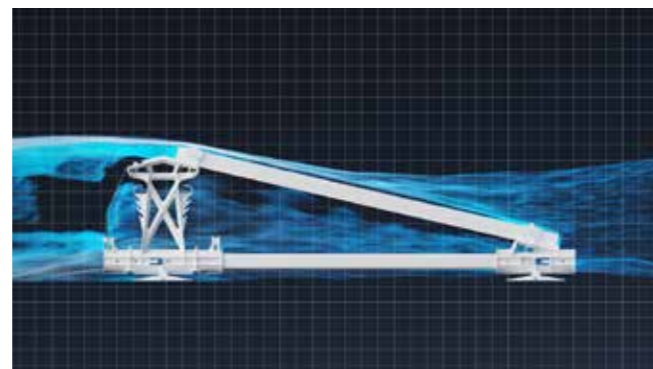
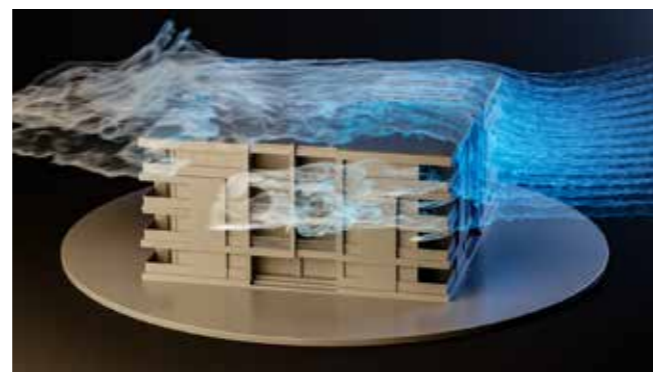
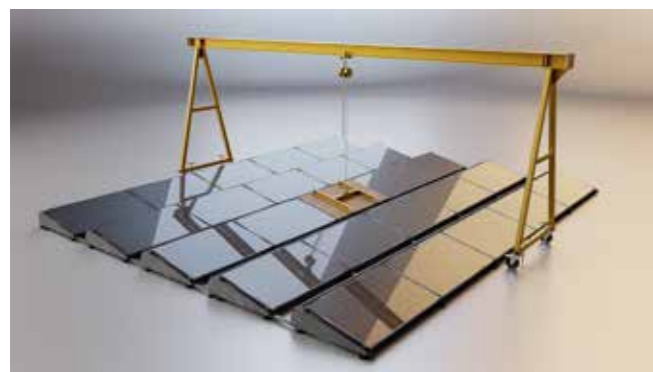
All our mounting systems consist of light, solid components and can be fixed with just one tool or even without tools. We prefer to use local, high-quality raw materials so that we can guarantee the origin and performance of our materials and minimise environmental impact with, for example, transport of raw materials and materials. These continuous efforts for quality and the environment have been awarded the Quality Management (ISO 9001) and Environmental Management (ISO 14001) certificates. Every year, an independent body such as DNV tests whether we still meet the high standards set for both certificates.



Testing

All our products are extensively tested. For example, on the influence of wind on a system with Computational Fluid Dynamics (CFD), simulation models and wind tunnel tests. This ensures that our systems can withstand wind and storms. Other tests we do focus on fire safety and corrosion.

The tests take place in various ways and locations; in our own test centre, for example, but also at recognised test labs such as KIWA / BDA and VDE, or together with other links in the chain such as corrugated roof supplier Eternit.



Product certifications

To leave no doubt about the accuracy and reliability of our test results, we believe it is important that they are confirmed by independent, recognised bodies. Our products are certified by leading test labs for certifications in different countries, each of which has its own requirements. For example, our products include certifications for France (ETN), United Kingdom (MSC) and Germany (DIBt).



All test results form, among other things, the basis for the Esdec Calculator, which we also tested in its entirety for accuracy. It resulted in a Peutz certificate and the guarantee that all calculations are performed correctly.

Guarantee

Thanks to our intensive test programme and independent confirmation from recognised test labs, Esdec gives a 20-year product guarantee with complete confidence.



ARTIKELLIJST CLICKFIT EVO



TILED ROOF

ROOF FASTENERS

ClickFit EVO Universal Roof Hook	1008040
ClickFit EVO Roof Hook Universal (low temperature)	1008040-LT
ClickFit EVO Truss Hook	1008045
ClickFit EVO Mounting Rail 1188mm	1008131
ClickFit EVO Mounting Rail 2338mm	1008132
ClickFit EVO Mounting Rail 3488mm	1008133
ClickFit EVO Mounting Rail 3500mm	1008007
ClickFit EVO Mounting Rail 4638mm	1008134
ClickFit EVO Mounting Rail 5770mm	1008135

MODULE CLAMP & END CAP

ClickFit EVO Module Clamp Universal grey	1008020
ClickFit EVO Module Clamp Universal black	1008020-B
ClickFit EVO Mounting Rail End Cap grey	1008060
ClickFit EVO Mounting Rail End Cap black	1008060-B

ACCESSORIES

ClickFit EVO Mounting Rail Coupler	1008061
ClickFit EVO MLPE Clip Light Weight	1008067
ClickFit EVO MLPE Clip Heavy Weight	1008068
ClickFit EVO Roof Hook Spacer	1008063
ClickFit EVO Auxiliary set with cable clip	1008064
ClickFit EVO Self drilling screw 6,3x42mm SW10/T30	1003016

STEEL ROOF
ROOF FASTENERS

ClickFit EVO Steel roof - Low mounting profile landscape	1008048
ClickFit EVO Steel roof - Low mounting profile portrait	1008049
ClickFit EVO Steel roof - High mounting profile landscape	1008050
ClickFit EVO Steel roof - High mounting profile portrait	1008051
ClickFit EVO - Self-tapping screw 6,0x25 mm SW10 HEX/T30	1008085
ClickFit EVO Rivet	1008087

HANGER BOLT & MOUNTING RAIL

ClickFit EVO Hanger Bolt M10x200mm	1008011
ClickFit EVO Hanger Bolt M10x250mm	1008012
ClickFit EVO Hanger Bolt M12x250mm	1008013
ClickFit EVO Hanger Bolt M12x300mm	1008014
ClickFit EVO Hanger Bolt M12x350mm	1008015
ClickFit EVO Mounting Rail 1188mm	1008131
ClickFit EVO Mounting Rail 2338mm	1008132
ClickFit EVO Mounting Rail 3488mm	1008133
ClickFit EVO Mounting Rail 3500mm	1008007
ClickFit EVO Mounting Rail 4638mm	1008134
ClickFit EVO Mounting Rail 5770mm	1008135

MODULE CLAMP & END CAP

ClickFit EVO Module Clamp Universal grey	1008020
ClickFit EVO Module Clamp Universal black	1008020-B
ClickFit EVO Mounting Rail End Cap grey	1008060
ClickFit EVO Mounting Rail End Cap black	1008060-B

STEEL ROOF

ClickFit EVO End Cap without end clamp support grey	1008066
ClickFit EVO End Cap without end clamp support black	1008066-B
ClickFit EVO End Clamp Support grey	1008065
ClickFit EVO End Clamp Support black	1008065-B

ACCESSORIES

ClickFit EVO Mounting Rail Connector Piece	1008061
ClickFit EVO MLPE Clip Light Weight	1008067
ClickFit EVO MLPE Clip Heavy Weight	1008068
ClickFit EVO Auxiliary set with cable clip	1008064
ClickFit EVO Bit torx 30	1008069
ClickFit EVO EPDM adapter profile corrugated steel roof 'Basic' landscape	1008081
ClickFit EVO EPDM EPDM adapter profile corrugated steel roof 'Optimizer-ready' landscape	1008082

CORRUGATED ROOF
ROOF FASTENERS

ClickFit EVO Corrugated Sheet Mounting Bracket	1008090
ClickFit EVO Hanger Bolt M10x200mm	1008011
ClickFit EVO Hanger Bolt M10x250mm	1008012
ClickFit EVO Hanger Bolt M12x250mm	1008013
ClickFit EVO Hanger Bolt M12x300mm	1008014
ClickFit EVO Hanger Bolt M12x350mm	1008015 [DTO]

CORRUGATED ROOF
MOUNTING RAIL

ClickFit EVO Mounting Rail 1188mm	1008131
ClickFit EVO Mounting Rail 2338mm	1008132
ClickFit EVO Mounting Rail 3488mm	1008133
ClickFit EVO Mounting Rail 3500mm	1008007
ClickFit EVO Mounting Rail 4638mm	1008134
ClickFit EVO Mounting Rail 5770mm	1008135

MODULE CLAMP & END CONNECTORS

ClickFit EVO Module Clamp Universal grey	1008020
ClickFit EVO Module Clamp Universal black	1008020-B
ClickFit EVO Mounting Rail End Cap grey	1008060
ClickFit EVO Mounting Rail End Cap black	1008060-B
ClickFit EVO End Cap without end clamp support grey	1008066
ClickFit EVO End Cap without end clamp support black	1008066-B
ClickFit EVO End Clamp Support grey	1008065
ClickFit EVO End Clamp Support black	1008065-B

MOUNTING MATERIALS

ClickFit EVO Self drilling screw 6,3x42mm SW10/T30	1003016
--	---------

ACCESSORIES

ClickFit EVO Mounting Rail Connector Piece	1008061
ClickFit EVO MLPE Clip Light Weight	1008067
ClickFit EVO MLPE Clip Heavy Weight	1008068
ClickFit EVO Auxiliary set with cable clip	1008064
ClickFit EVO bit torx 30	1008069

STANDING SEAM ROOF
ROOF FASTENERS

ClickFit EVO Round Seam Clamp 23mm	1008031
ClickFit EVO Double-folded seam Clamp 9mm	1008033
ClickFit EVO Single Folded Seam Clamp 14mm	1008035

MOUNTING RAIL

ClickFit EVO Mounting Rail 1188mm	1008131
ClickFit EVO Mounting Rail 2338mm	1008132
ClickFit EVO Mounting Rail 3488mm	1008133
ClickFit EVO Mounting Rail 3500mm	1008007
ClickFit EVO Mounting Rail 4638mm	1008134
ClickFit EVO Mounting Rail 5770mm	1008135

MODULE CLAMP & END CAP

ClickFit EVO Module Clamp Universal grey	1008020
ClickFit EVO Module Clamp Universal black	1008020-B
ClickFit EVO Mounting Rail End Cap grey	1008060
ClickFit EVO Mounting Rail End Cap black	1008060-B
ClickFit EVO End Cap without end Clamp support grey	1008066
ClickFit EVO End Cap without end Clamp support black	1008066-B
ClickFit EVO End Clamp Support grey	1008065
ClickFit EVO End Clamp Support black	1008065-B

ACCESSORIES

ClickFit EVO Mounting Rail Connector Piece	1008061
ClickFit EVO MLPE Clip Light Weight	1008067
ClickFit EVO MLPE Clip Heavy Weight	1008068
ClickFit EVO Self drilling screw 6.3x42mm SW10/T30	1003016

STANDING SEAM ROOF

ClickFit EVO Auxiliary set with cable clip	1008064
ClickFit EVO bit torx 30	1008069

EPDM AND BITUMEN ROOF
ROOF FASTENERS

ClickFit EVO Hanger Bolt M10x200mm	1008011
ClickFit EVO Hanger Bolt M10x250mm	1008012
ClickFit EVO Hanger Bolt M12x250mm	1008013
ClickFit EVO Hanger Bolt M12x300mm	1008014
ClickFit EVO Hanger Bolt M12x350mm	1008015 [DTO]

MOUNTING RAIL

ClickFit EVO Mounting Rail 1188mm	1008131
ClickFit EVO Mounting Rail 2338mm	1008132
ClickFit EVO Mounting Rail 3488mm	1008133
ClickFit EVO Mounting Rail 3500mm	1008007
ClickFit EVO Mounting Rail 4638mm	1008134
ClickFit EVO Mounting Rail 5770mm	1008135

MODULE CLAMP & END CAP

ClickFit EVO Module Clamp Universal grey	1008020
ClickFit EVO Module Clamp Universal black	1008020-B
ClickFit EVO Mounting Rail End Cap grey	1008060
ClickFit EVO Mounting Rail End Cap black	1008060-B
ClickFit EVO End Cap without end Clamp support grey	1008066

EPDM AND BITUMEN ROOF

ClickFit EVO End Cap without end Clamp support black	1008066-B
ClickFit EVO End Clamp Support grey	1008065
ClickFit EVO End Clamp Support black	1008065-B

ACCESSORIES

ClickFit EVO Mounting Rail Connector Piece	1008061
ClickFit EVO MLPE Clip Light Weight	1008067
ClickFit EVO MLPE Clip Heavy Weight	1008068
ClickFit EVO Self drilling screw 6.3x42mm SW10/T30	1003016
ClickFit EVO Auxiliary set with cable clip	1008064
ClickFit EVO bit torx 30	1008069
Kit for EPDM Roofing	1008086
Hanger Bolt Washer Inox 80mm	1003070

ARABIC TILES
ROOF FASTENERS

ClickFit EVO Hanger Bolt M10x200mm	1008011
ClickFit EVO Hanger Bolt M10x250mm	1008012
ClickFit EVO Hanger Bolt M12x250mm	1008013
ClickFit EVO Hanger Bolt M12x300mm	1008014
ClickFit EVO Hanger Bolt M12x350mm	1008015

ARABIC TILES

MOUNTING RAIL

ClickFit EVO Mounting Rail 1188mm	1008131
ClickFit EVO Mounting Rail 2338mm	1008132
ClickFit EVO Mounting Rail 3488mm	1008133
ClickFit EVO Mounting Rail 3500mm	1008007
ClickFit EVO Mounting Rail 4638mm	1008134
ClickFit EVO Mounting Rail 5770mm	1008135

MODULE CLAMP & END CAP

ClickFit EVO Module Clamp Universal grey	1008020
ClickFit EVO Module Clamp Universal black	1008020-B
ClickFit EVO Mounting Rail End Cap grey	1008060
ClickFit EVO Mounting Rail End Cap black	1008060-B
ClickFit EVO End Cap without end Clamp support grey	1008066
ClickFit EVO End Cap without end Clamp support black	1008066-B
ClickFit EVO End Clamp Support grey	1008065
ClickFit EVO End Clamp Support black	1008065-B

ACCESSORIES

ClickFit EVO Mounting Rail Connector Piece	1008061
ClickFit EVO MLPE Clip Light Weight	1008067
ClickFit EVO MLPE Clip Heavy Weight	1008068
ClickFit EVO Self drilling screw 6,3x42mm SW10/T30	1003016
ClickFit EVO Auxiliary set with cable clip	1008064
ClickFit EVO bit torx 30	1008069

SLATE ROOF

ROOF FASTENERS

ClickFit EVO Slate Roof Hook	1008042
------------------------------	---------

MOUNTING RAIL

ClickFit EVO Mounting Rail 1188mm	1008131
ClickFit EVO Mounting Rail 1188mm	1008132
ClickFit EVO Mounting Rail 1188mm	1008133
ClickFit EVO Mounting Rail 1188mm	1008007
ClickFit EVO Mounting Rail 1188mm	1008134
ClickFit EVO Mounting Rail 5770mm	1008135

MODULE CLAMP & END CAP

ClickFit EVO Module Clamp Universal grey	1008020
ClickFit EVO Module Clamp Universal black	1008020-B
ClickFit EVO Mounting Rail End cap grey	1008060
ClickFit EVO Mounting Rail End cap black	1008060-B
ClickFit EVO End Cap without end clamp support grey	1008066
ClickFit EVO End Cap without end clamp support black	1008066-B
ClickFit EVO End Clamp Support grey	1008065
ClickFit EVO End Clamp Support black	1008065-B

ACCESSORIES

ClickFit EVO Mounting Rail Connector Piece	1008061
ClickFit EVO MLPE Clip Light Weight	1008067
ClickFit EVO MLPE Clip Heavy Weight	1008068
ClickFit EVO Auxiliary set with cable clip	1008064
ClickFit EVO bit torx 30	1008069

ARTIKELLIJST FLATFIX FUSION

LANDSCAPE

SYSTEM COMPONENTS

FlatFix Fusion Roof Support	1007012
FlatFix Fusion Low Base	1007022
FlatFix Fusion High Base	1007031
FlatFix Fusion Wind Deflector Rear */**	1007201
FlatFix Fusion Wind Deflector Left** with base profile 940mm	1007224
FlatFix Fusion Wind Deflector Left** with base profile 1030mm and 1077mm	1007226
FlatFix Fusion Wind Deflector Right** with base profile 940mm	1007225
FlatFix Fusion Wind Deflector Right** with base profile 1030mm and 1077mm	1007227
FlatFix Fusion Ballast Container*	1007202
FlatFix Fusion Stabilizer*	1007203
FlatFix Fusion Base Profile 210mm	1007121**
FlatFix Fusion Base Profile 370mm	1007137**
FlatFix Fusion Base Profile 550mm	1007155**
FlatFix Fusion Base Profile 750mm	1007175**
FlatFix Fusion Base Profile 940mm	1007194
FlatFix Fusion Base Profile 1030mm	1007195
FlatFix Fusion Base Profile 1077mm	1007196

* Also available in 1600, 1700, 1900, 2000 & 2100 ** Also available in black

FASTENERS

Esdec Mounting Screw*/** 6x55mm	1000655
Esdec Mounting Screw*/** 6x70mm	1000670
Esdec Mounting Screw*/** 6x12mm	1000612
Esdec Screw 6,0 x 25mm (self tapping)	1008085
Esdec Screw 6,3 x 42 mm SW10/T30 (self drilling)	1003016

* Depending on panel thickness and related end clamp ** Also available in black

LANDSCAPE
CLAMPS

FlatFix Fusion universal module clamp with bonding**	1003022
FlatFix End Clamp 30-50mm*/**	10043__
FlatFix End Clamp 30-50mm*/**	10044__ (balck)

* Depending on panel thickness (in mm) ** Also available in black

ACCESSORIES

FlatFix Fusion Grounding Spring	1007502*
FlatFix Fusion Grounding Clamp (6mm2)	1007505
FlatFix Fusion TPO Mat	1007015
FlatFix Fusion Grounding Bracket	1007503
FlatFix Fusion Roof support adapter	1007011
FlatFix Fusion Low base extension	1007022-WP
FlatFix Fusion Cable exit guide	1005570
FlatFix Fusion MLPE Clip Light Weight	1007042

PORTRAIT
SYSTEM COMPONENTS

FlatFix Fusion roof support	1007012
FlatFix Fusion Low Base Portrait	1007027
FlatFix Fusion High Base Portrait	1007037
FlatFix Fusion Wind Deflector Rear Portrait Black	1007231
FlatFix Fusion Wind Deflector Left Portrait Black	1007232
FlatFix Fusion Wind Deflector Right Portrait Black	1007233
FlatFix Fusion Ballast Container Portrait	1007230

PORTRAIT

FlatFix Fusion Base Profile 370mm zwart	1007637
FlatFix Fusion Base Profile 550mm zwart	1007655
FlatFix Fusion Base Profile 750mm zwart	1007675
FlatFix Fusion Base Profile 1670mm	1007197

FASTENERS

Esdec Mounting Screw* 6x55mm black	1000655-B
Esdec Mounting Screw* 6x70mm black	1000670-B
Esdec Mounting Screw* 6x12mm black	1000612-B
Esdec Screw 6,0 x 25mm (self tapping)	1008085
Esdec Screw 6,3 x 42 mm SW10/T30 (self drilling)	1003016

* Depending on panel thickness and related end clamp ** Also available in black

CLAMPS

Flatfix Fusion Universal module clamp with bonding	1003022-B
FlatFix Fusion End clamp 30-40mm* zwart	10044__ (zwart)

* Depending on panel thickness (in mm)

ACCESSORIES

FlatFix Fusion Grounding Spring	1007502*
FlatFix Fusion Grounding Clamp (6mm2)	1007505
FlatFix Fusion TPO Mat	1007015
FlatFix Fusion Grounding Bracket	1007503
FlatFix Fusion Roof support adapter	1007011
FlatFix Fusion Low base extension	1007022-WP
FlatFix Fusion Cable exit guide	1005570
FlatFix Fusion MLPE Clip Light Weight	1007042





BUILDING VALUE FOR SOLAR PROFESSIONALS

Esdec

Londenstraat 16
7418 EE Deventer
Nederland

☎ +31 850 702 000

✉ info@esdec.com